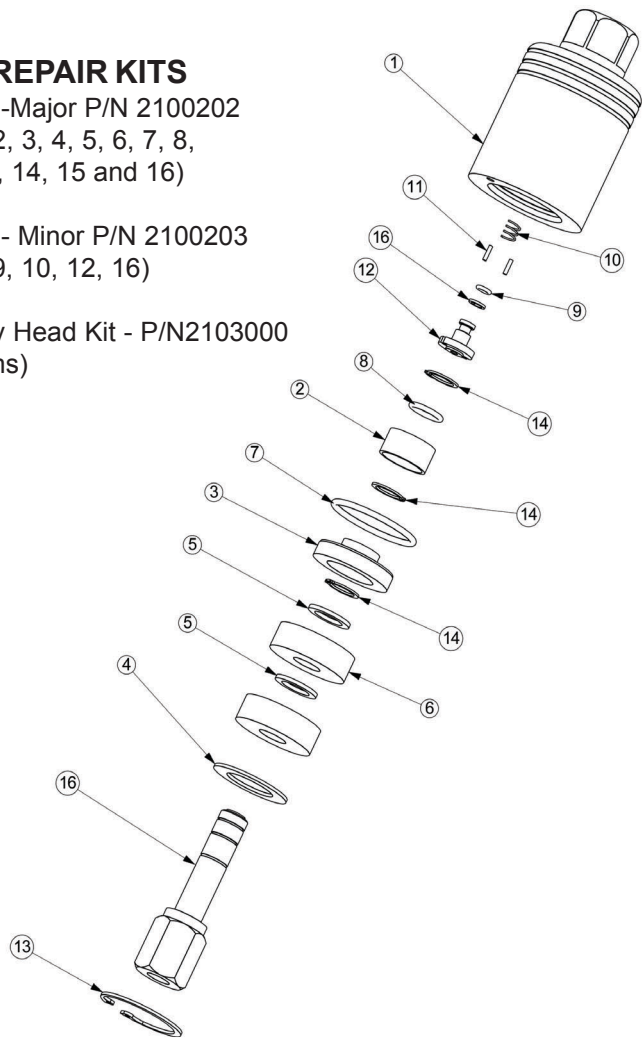


AVAILABLE REPAIR KITS

Rotary Head Kit -Major P/N 2100202
(includes items 2, 3, 4, 5, 6, 7, 8,
9, 10, 11, 12, 13, 14, 15 and 16)

Rotary Head Kit - Minor P/N 2100203
(includes items 9, 10, 12, 16)

Complete Rotary Head Kit - P/N2103000
(includes all items)



ITEM NO.	PART NO.	DESCRIPTION	QTY.
1	2510017	Housing, Swivel	1
2	2520030	Bearing Retainer, Small	1
3	2520028	Retainer, Bearing	1
4	2520031	Washer, Bearing Retainer	1
5	2520027	Spacer, Bearing	2
6	2640004	Bearing, 15 x 42	2
7	2701012	O-Ring	1
8	2701011	O-Ring	1
9	2701010	O-Ring	1
10	2720007	Spring, Compression	1
11	2530008	Pin	2
12	2530007	Stem, Small	1
13	2200037	Snap Ring	1
14	2520029	Snap Ring	3
15	2200038	Stem, Swivel	1
16	2710000	Back Up Ring	1

THE HAMMERHEAD PROFESSIONAL FLAT SURFACE CLEANER

FROM GENERAL PUMP

- FULL 20" CLEANING PATH
- HEAVY-DUTY ANODIZED ALUMINUM COMPONENTS
- RUGGED ABS COVER



DFSCP20
OPERATOR'S MANUAL

WARNING: Read Before Operating Machine!
Always wear protective eyewear
Keep clear of rotating nozzles
Never lock trigger gun open with any device
Drain water in cold weather to avoid freezing
Tampering with any part of this machine will void all warranties.



Operating Instructions

1. Connect to Pressure Washer.
2. Turn water on and open valve. Open trigger gun for flow of water through nozzles. Nozzles must have flowing spray. If not, remove tips and clean; reassemble, making sure that groove of nozzle is parallel to spray bar. Use pipe dope when installing nozzles.
3. Start Pressure Washer. The Hammerhead is ready for operation.
4. Walk slowly behind the Hammerhead cleaning as you go. If striping occurs, slow down your pace.
5. Check “weep holes” on bottom of swivel periodically. Water will seep slowly; if water shoots out, stop and replace seals. Swivel assembly can be rebuilt.
6. For maximum effectiveness keep spray tips clean. If the machine vibrates, stop and clean spray tips.

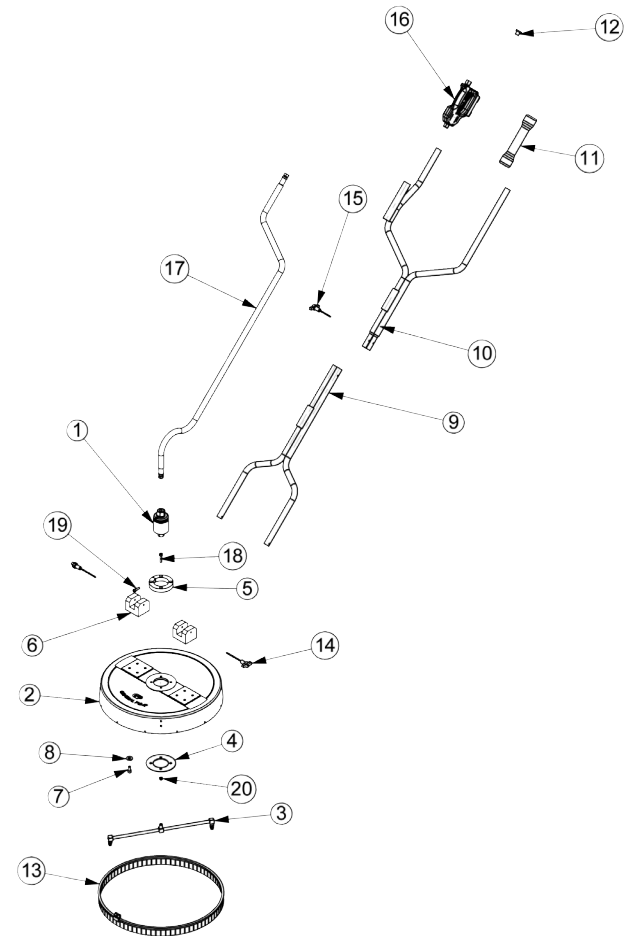
DO NOT ALLOW MACHINE TO REMAIN STATIONARY ON SOFT SURFACES, SUCH AS WOOD.

CAUTION: Striking any raised obstacle during operation will damage machine. If contact does occur and results in vibration when operating machine, STOP and replace spray bar. Continued operation could result in serious injury or damage to machine.

Operating Pressures: 1,000 to 4,000 PSI
 Max Flow: 8.0 GPM
 Dimensions: 70" x 21" x 21"
 Weight: 21 lbs.

General Pump

1174 Northland Drive ◯ Mendota Heights, MN 55120
 651.454.6500 ◯ Fax: 651.454.8015
 www.generalpump.com



ITEM NO.	PART NO.	DESCRIPTION	QTY.
1	2103000	Swivel	1
2	2660045	Deck, GP	1
3	2530009	Arm, Rotary, Assy.	1
4	2630010	Plate, Retaining	1
5	2540023	Collar, Split	1
6	2540020	Block, Handle	2
7	2200048	SHCS, M10 x 1.5 x 20, SST	8
8	2200042	Washer, M10, Flat, SST	8
9	2540021	Handle, Lower	1
10	2540022	Handle, Upper	1
11	2660047	Grip, Handle	1
12	2660046	Plug, Handle	1
13	2660044	Brush Assy.	1
14	2200052	Lock, Pin, 75 mm	2
15	2200045	Lock, Pin, 50 mm	1
16	DG4000FSC	Gun, Flat Surface Cleaner	1
17	2702000	Hose	1
18	2200055	SHCS, M8 x 1.25 x 35 Stainless	4
19	2200054	SHCS, M8 x 1.25 x 25 Stainless	1
20	2200053	Nut, M8 x 1.25, Nylok, SST	4